

Florida Easy Filer Operating Instructions

Name	Size	Type
Company_Abrev_Sample.xls	46 KB	Microsoft Excel Work
Config_Insurer.xml	2 KB	XML Document
FEF_Insurer.exe	97 KB	Application
FEF_Insurer.pdb	64 KB	PDB File
FEF_Insurer.vshost.exe	14 KB	Application
FEF_Insurer.vshost.exe.manifest	2 KB	MANIFEST File
FEF_Insurer.xml	1 KB	XML Document
FEF_InsurerR.zip	72 KB	WinZip File
Insurer1.slx	27 KB	FLSO Data File

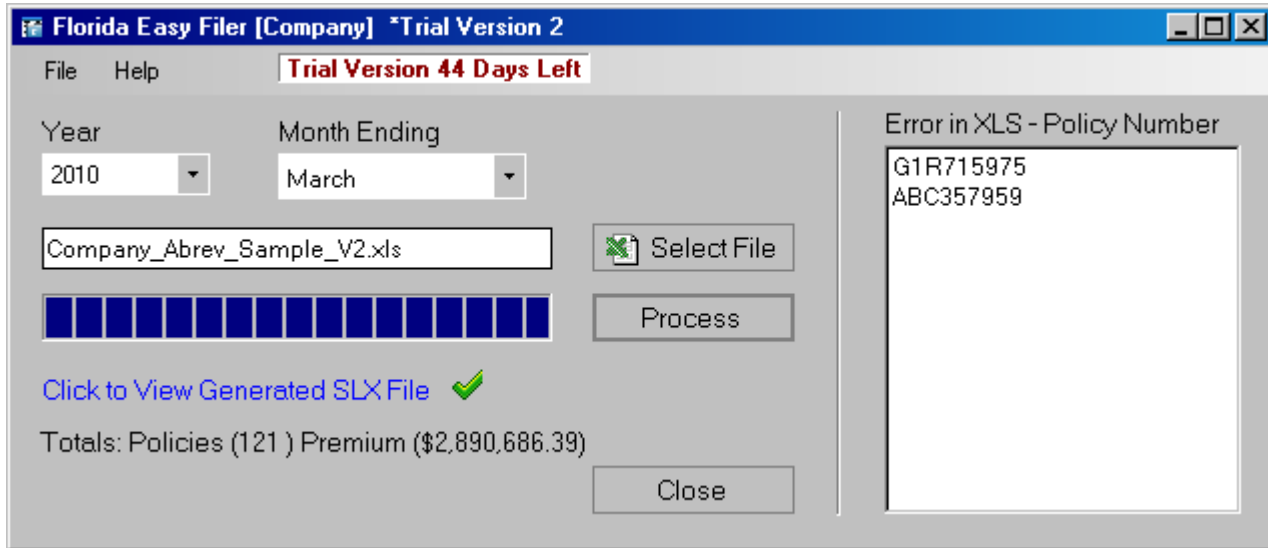
**Double Click
FEF_InsurerV2.exe
the start the program**

**Select the Quarter ending Month
and Year of your filing from the
drop down lists**

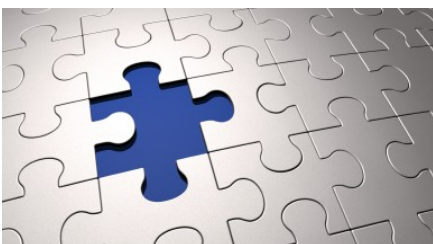
**Select the file to be processed
by clicking the
Select File
And selecting the file from your
PC**

Next click the process button
Process

Completed 2 policies with Errors



- ▶ Premium Totals and policy counts are shown on the bottom
- ▶ Policies records with errors are shown in the error window on the right and NOT included in the file created by the program (Insurer1.slx)
- ▶ You can view the file by clicking on the link
- ▶ The file is named Insurer1.slx and is in the same folder as the program
- ▶ You must close the program and restart it before running another file



Surplus Lines Associates, LLC